



# Conservation of the Lynx at the Bohemian/Bavarian frontier



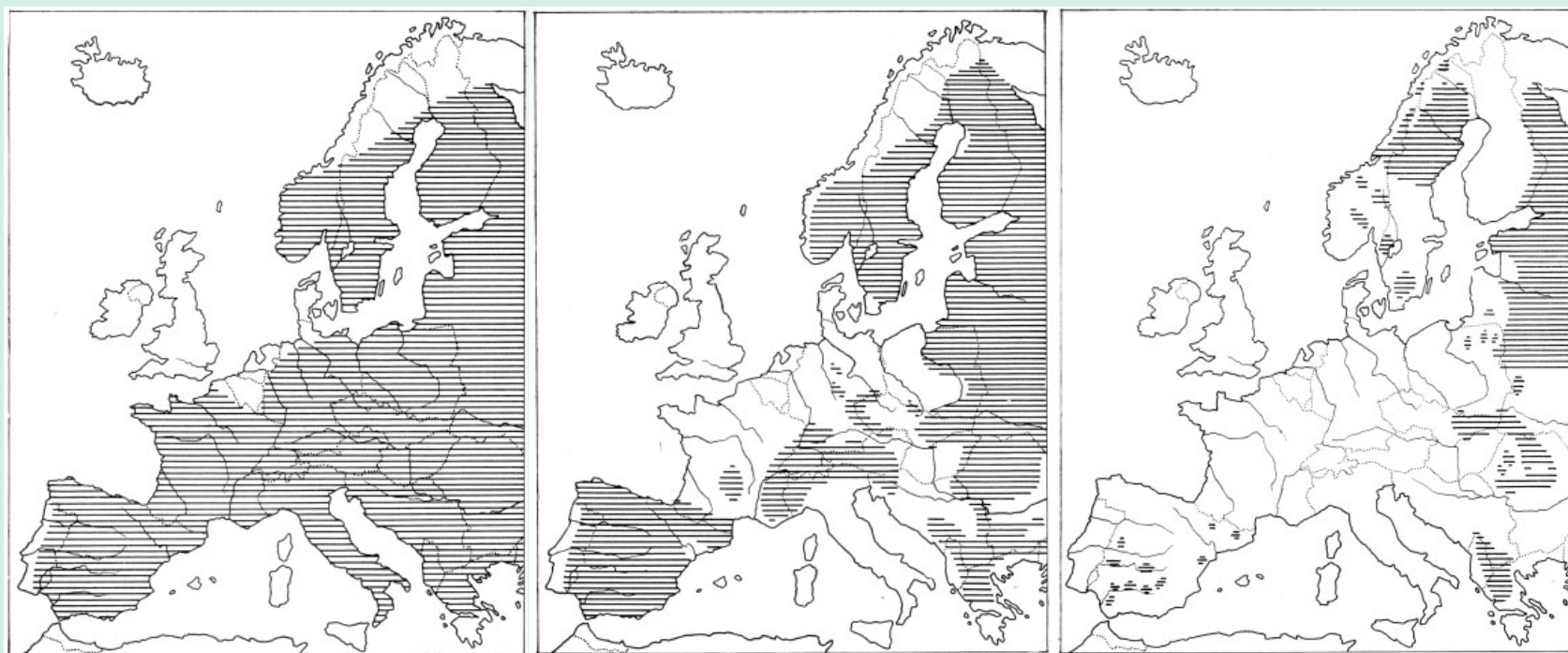
**J. Šíma, A. Červená** - Species protection Unit, MOE

**T. Mináriková** - Agency for Nature Conservation and Landscape Protection of the Czech Republic

**J. Červený** - Institute of Vertebrate Biology, Czech Academy of Sciences & Faculty of Forestry and Wood Sciences, Czech University of Life Sciences



## History of the Lynx in Europe (Kratochvíl et al., 1968)



historically

1800

1960





## Land-use changes

- from middle ages till 2nd half of 20. cent:

- deforestation of habitat
- decrease of prey abundance

- **present situation:**

- aforestation
- high prey abundance
- habitat fragmentation and lost of connectivity



- **intense hunting of large carnivores in history**  
(last lynxes at South Bohemia/Bavaria: 1835-94)





## **Reintroduction of the lynx to the South Bohemian/Bavarian region:**

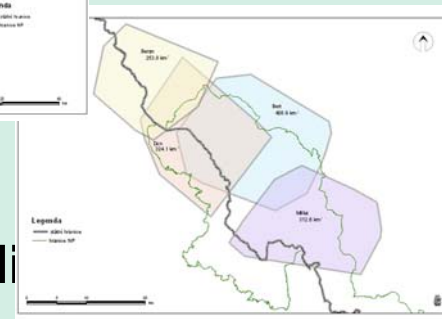
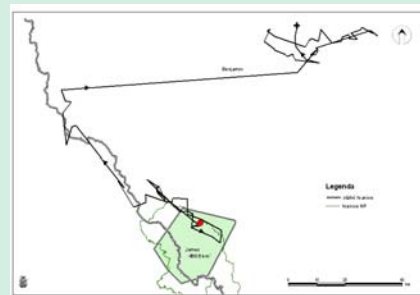
- **1970- 72 Bavarian forest Mts. (5 – 9 individuals)**
- **1982 – 82 Šumava Mts. - „Program Lynx“ (17 – 18 individuals)**
- **since 1995 population of 70 – 100 animals**





## Monitoring of the lynx at Šumava/Bavarian forest Mts.

- snow tracking
- questionnaires
- hunting (hunters) statistics
- radiotelemetry - since 1996 (23 individuals)
  - GPS collars since 2002 (4 individuals)
  - telemetry of the prey

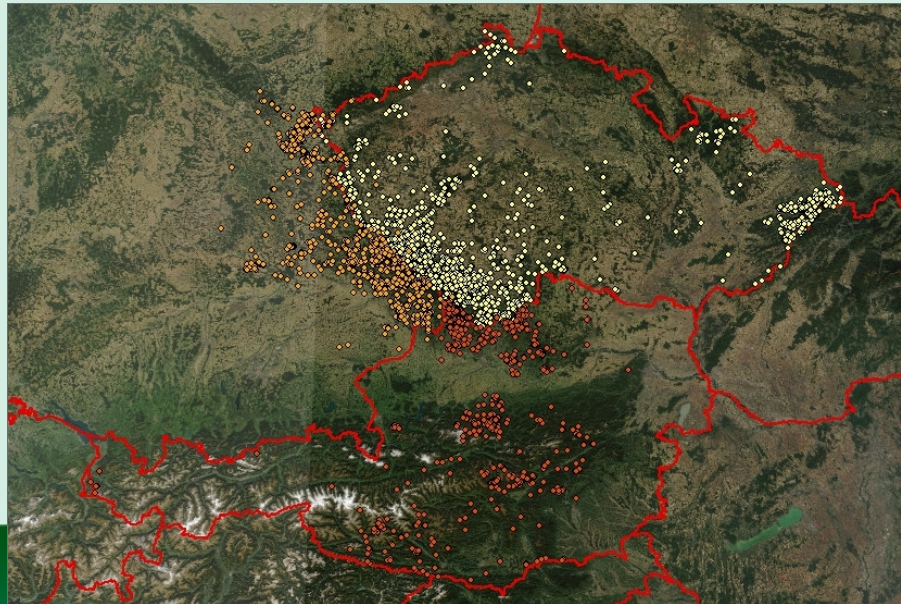


Research on spatial organization, reproduction, behavior, diurnal activity, food ecology, genetics, parasitology, morphology etc.





- monitoring is coordinated on both sides of the Czech/Bavarian border by the administrations of the NP Šumava and NP Bayerischewald
- coordination at the national level by the Agency for the Nature Protection
- important part of the CELTIC initiative





## **Need to increase cooperation on:**

- **illegal hunting (poaching) reduction**
- **dealing with the habitat fragmentation and migration barriers problem**
- **etc.**







**Thank you**



**for attention**

**Ministry of the Environment  
of the Czech Republic  
Vršovická 65  
Praha 10, 100 10**

**Tel: ++420-267 122 587  
Fax: ++420-267 126 587  
Email:  
[jan\\_sima@env.cz](mailto:jan_sima@env.cz)**