



Schweizerische Eidgenossenschaft
Confédération suisse
Confederazione Svizzera
Confederaziun svizra

Eidgenössisches Departement für
Umwelt, Verkehr, Energie und Kommunikation UVEK

Bundesamt für Umwelt BAFU
Abteilung

Conservation of Large carnivores in the Alps

*Pan European Conference on Population level Management Plans for
Large carnivores*

Postojna, 10th June 2008

Dr. Reinhard Schnidrig,
Federal Office for the Environment, Switzerland

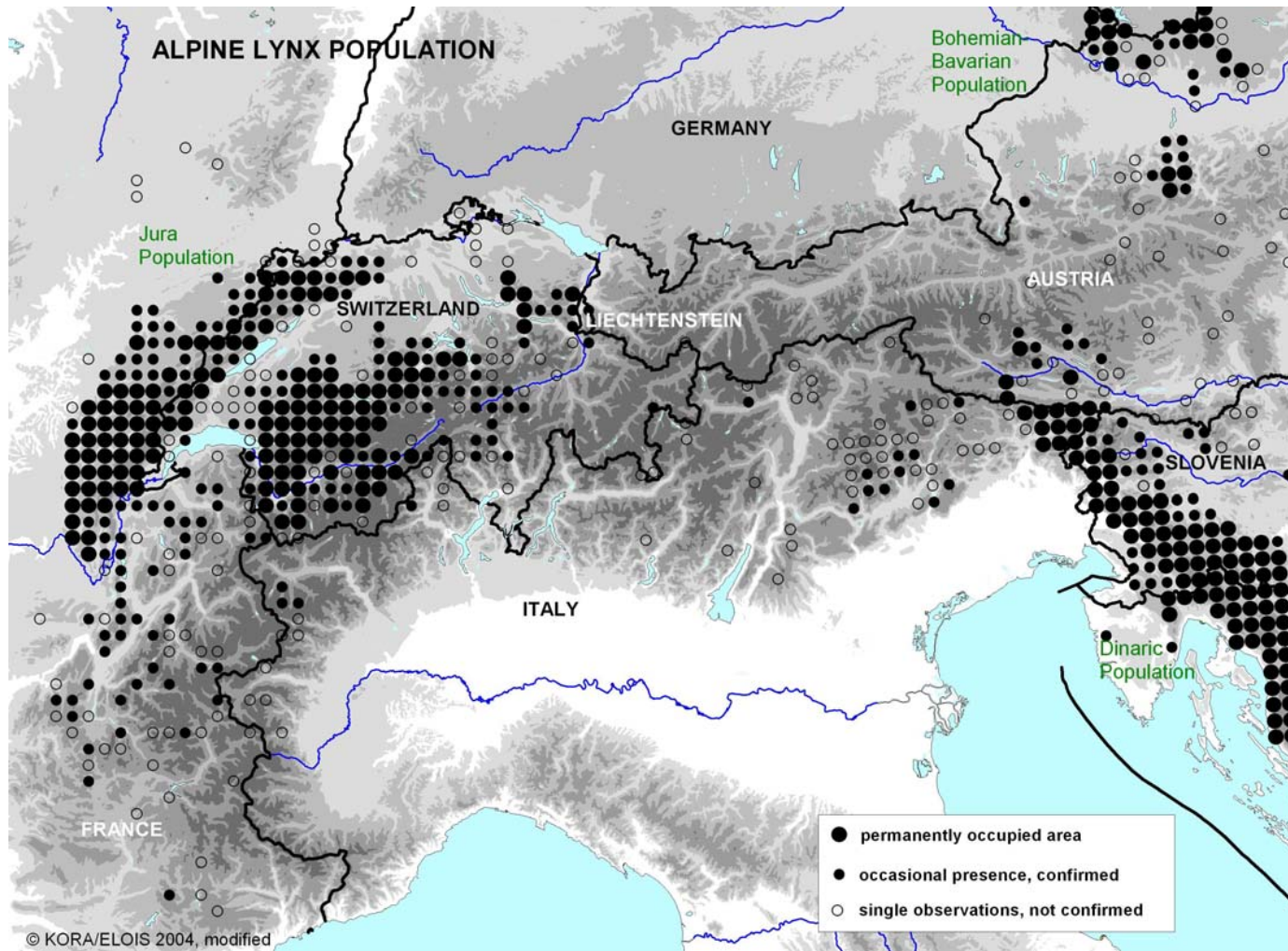


Lynx



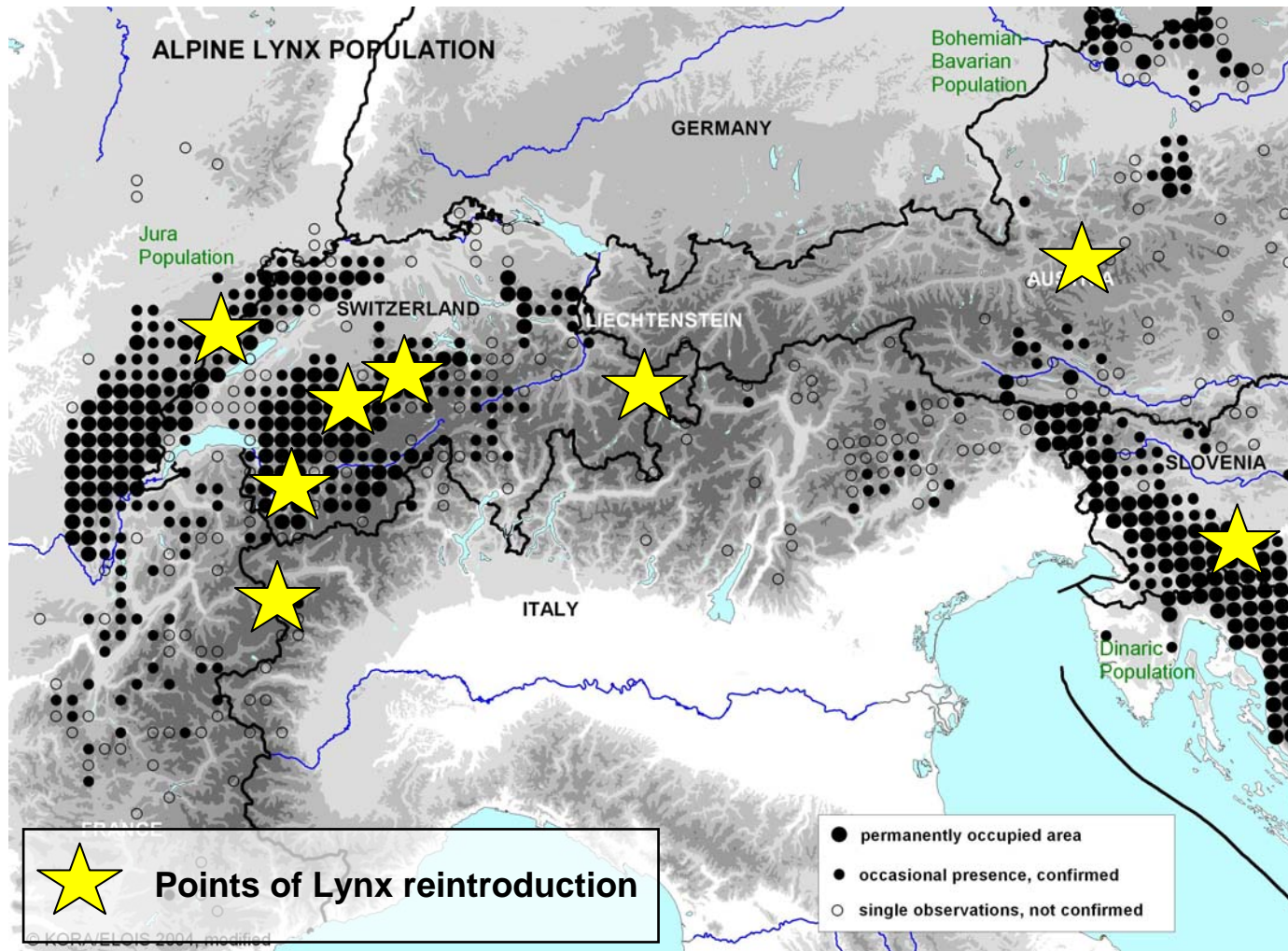


The distribution of large carnivores in the Alps



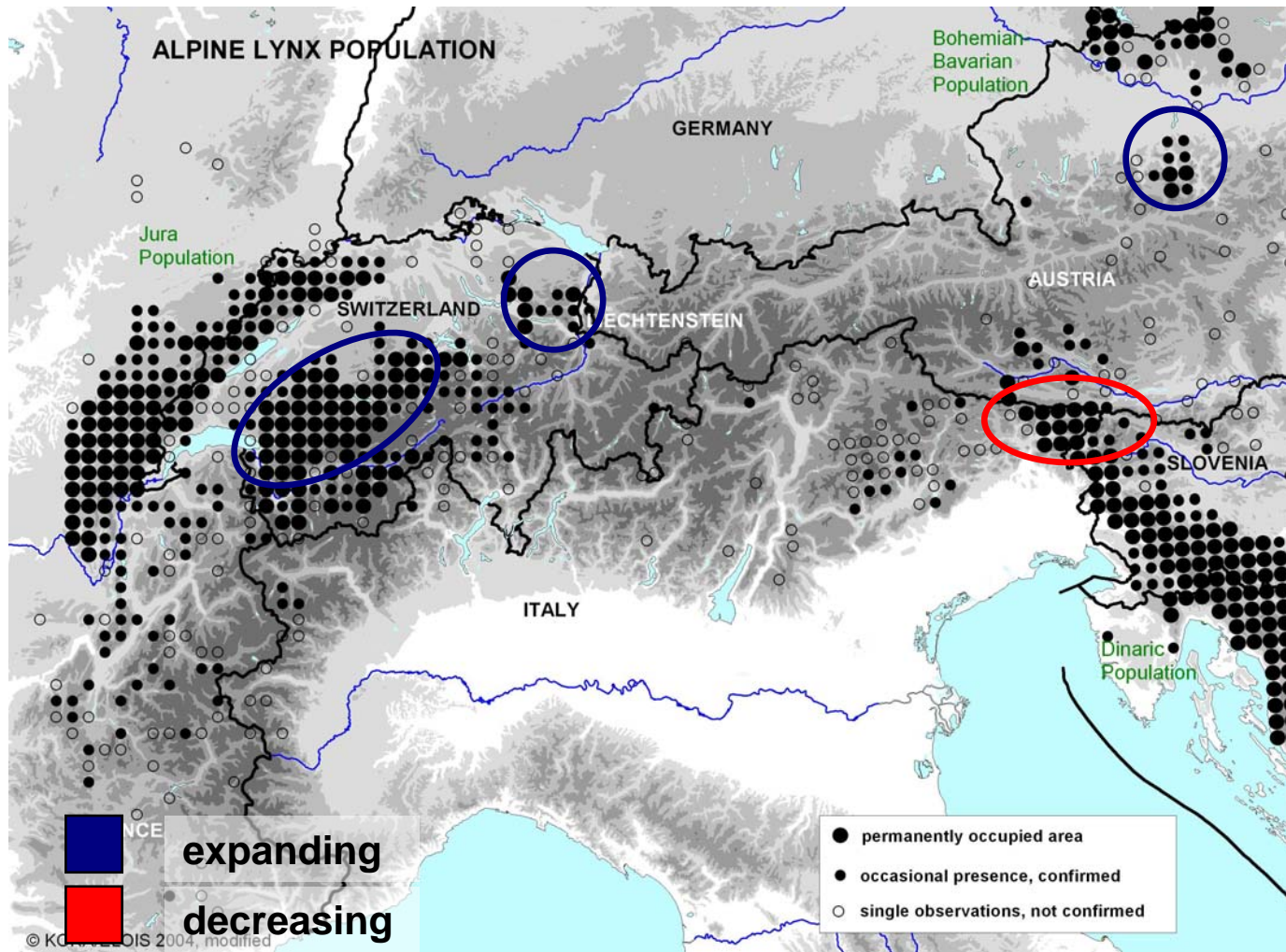


The distribution of large carnivores in the Alps





The distribution of large carnivores in the Alps





Lynx

- **Project SCALP**

*Status and Conservation of the Alpine Lynx Population
(Cooperation between A, CH, D, F, FL, It, Slo)*

- Network of Experts

- Achievements:

PACS (Pan-Alpine Conservation Strategy for the Lynx)

SCALP-Criteria for monitoring

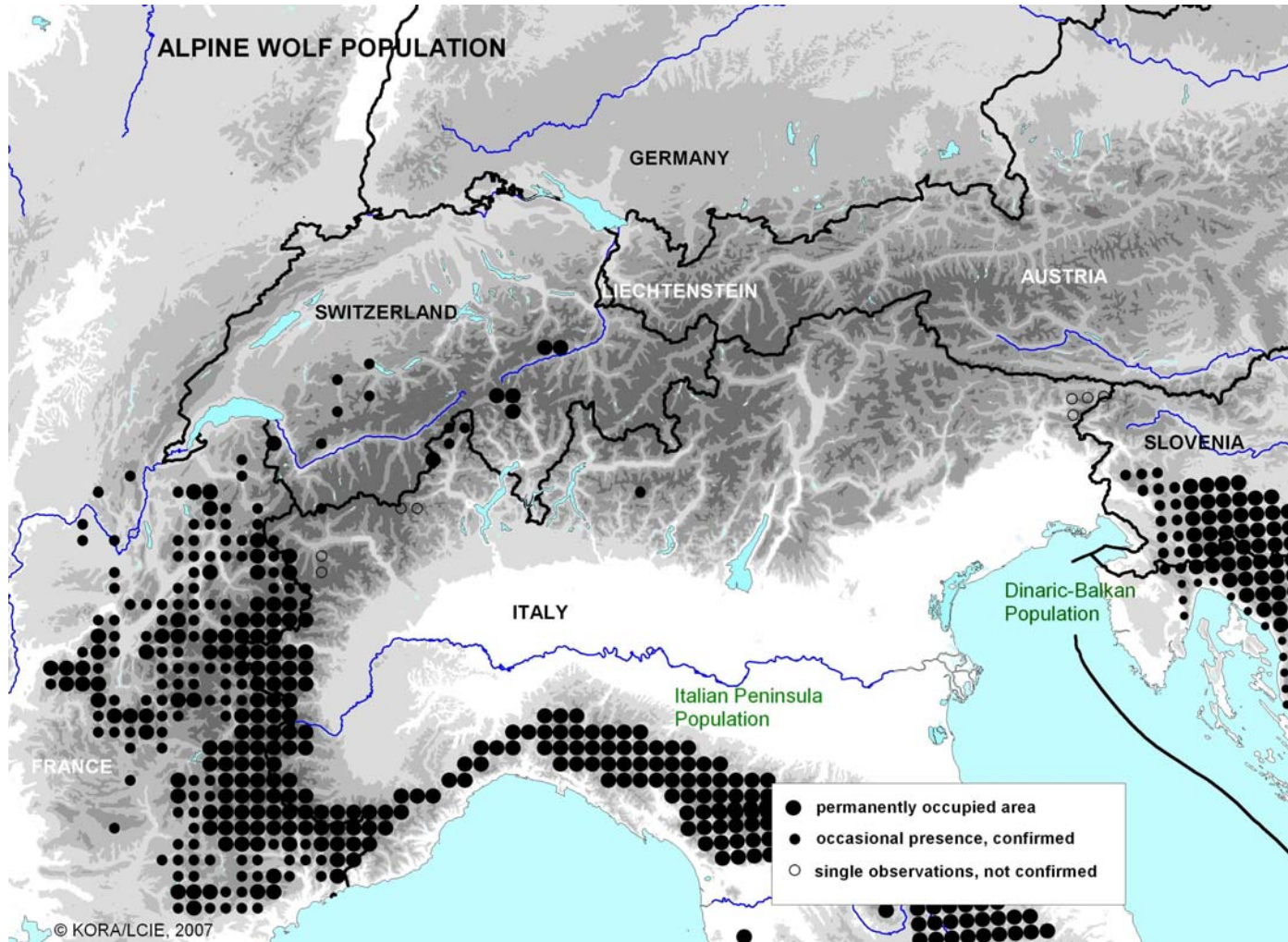


Wolf





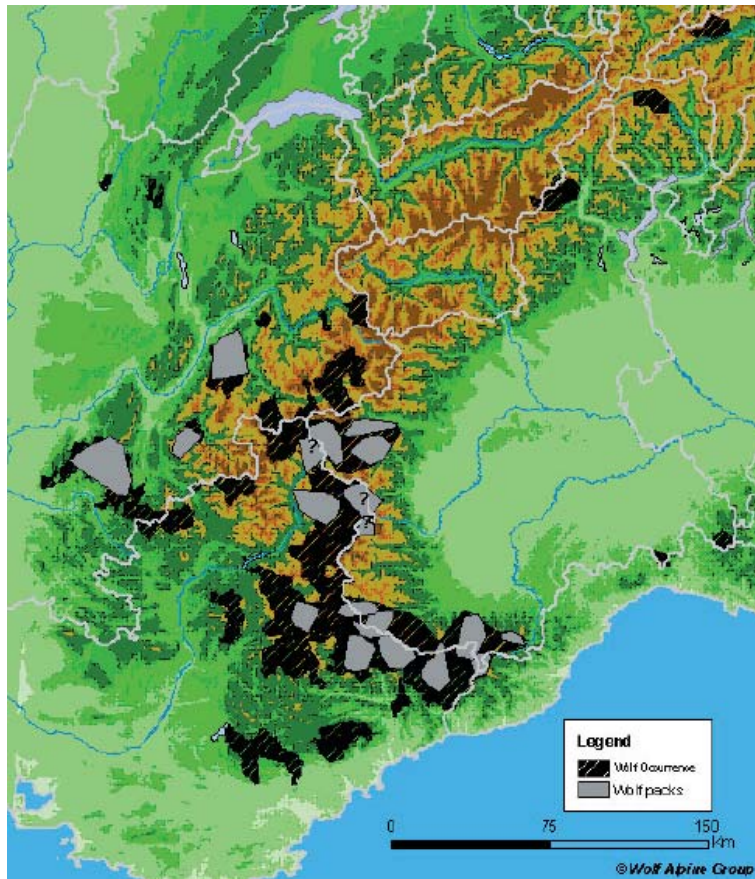
The distribution of large carnivores in the Alps





Wolf

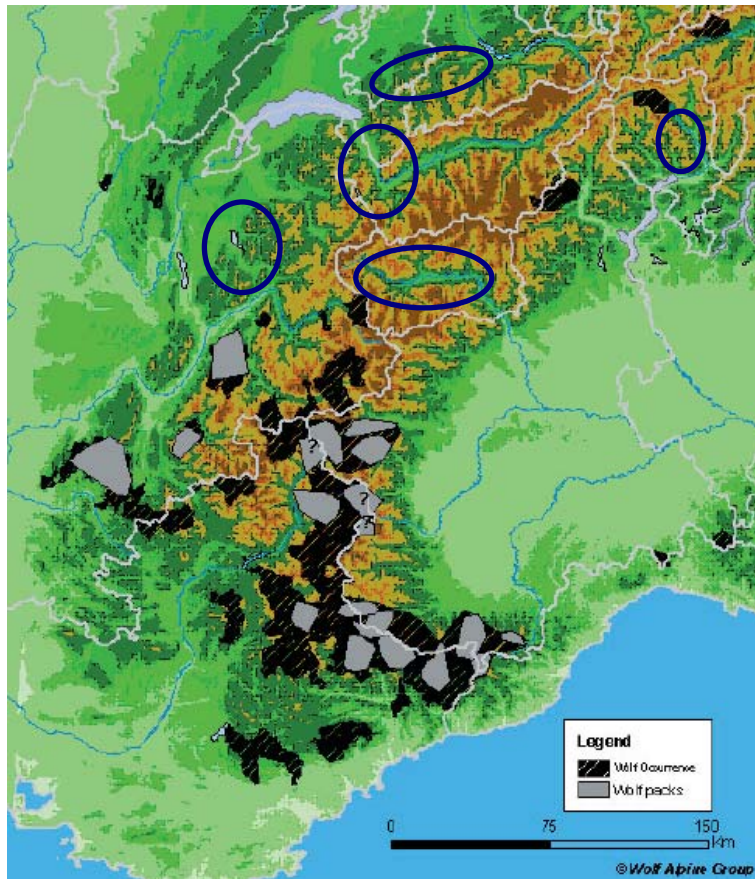
- Spreading wolf population for the last 25 years





Wolf

- Spreading wolf population for the last 25 years








Wolf

- „**Accordo lupo**“

(Collaboration between Italy, France and Switzerland)

- Permanent committee
- Technical groups
- Wolf Alpine Group (WAG)

- Shared population
- Monitoring/ maps on population level

Protocollo di collaborazione italo-franco-svizzera per la gestione del lupo nelle Alpi

Protocole de collaboration italo-franco-suisse pour la gestion du loup dans les Alpes

<p>Premesso che:</p> <ul style="list-style-type: none"> • La Raccomandazione del Comitato permanente della Convenzione di Berna n. 82 del 2000, richiamando la Raccomandazione n. 74 del 1999, raccomanda alle Parti contraenti una serie di azioni specifiche per la conservazione dei grandi carnivori, tra cui, specificamente rivolte a Francia, Italia e Svizzera (Lupo nelle Alpi occidentali) le seguenti: <ul style="list-style-type: none"> ◦ riconoscere, ai fini della gestione, la popolazione del lupo alpino come una entità geograficamente distinta; ◦ collaborare per una gestione congiunta della popolazione di lupo alpino, stabilendo adeguate strutture e contatti tecnici e politici; ◦ favorire il mantenimento della popolazione di lupo alpino in un buono stato di conservazione nel quadro di uno sviluppo sostenibile delle aree rurali; • Nel corso della sua 24a sessione, tenutasi a Strasburgo dal 30 novembre al 4 dicembre 2004, il Comitato permanente della Convenzione di Berna ha deciso, in riferimento alla richiesta della Svizzera di declassare il lupo (<i>Canis lupus</i>) dall'allegato II all'allegato III della Convenzione, di "rinviare la discussione sulla proposta svizzera a un prossimo incontro e di preparare il rapporto summenzionato", approvando tra l'altro la proposta dei Paesi dell'UE di condurre uno studio scientifico sulle dimensioni e sulla distribuzione delle popolazioni europee di lupo nonché sulle minacce a cui sono esposte. 	<p>Considérant que:</p> <ul style="list-style-type: none"> • La Recommandation du comité permanent de la Convention de Berne n° 82 de 2000, se référant à la Recommandation n° 74 de 1999, demande aux Parties contractantes de prendre des mesures spécifiques pour la conservation des grands carnivores, et que, parmi celles-ci, les mesures suivantes concernent spécifiquement la France, l'Italie et la Suisse (loup dans les Alpes occidentales): <ul style="list-style-type: none"> ◦ reconnaître, en ce qui concerne la gestion, la population de loups alpins comme une entité distincte; ◦ collaborer en vue d'une gestion conjointe de la population de loups alpins en établissant des structures adéquates et des contacts techniques et politiques; ◦ favoriser le maintien de la population de loups alpins dans un bon état de conservation, dans le cadre du développement durable des zones rurales. • Au cours de sa 24^e session qui a eu lieu à Strasbourg du 30 novembre au 4 décembre 2004, le comité permanent de la Convention de Berne a convenu – en se référant à la demande de la Suisse de déclasser le loup (<i>Canis lupus</i>) de l'Annexe II à l'Annexe III de la Convention – de "renvoyer la discussion sur la proposition suisse à une rencontre ultérieure et de préparer le rapport susmentionné", approuvant entre autres la proposition des pays de l'UE de mener une étude scientifique sur les dimensions et la distribution des populations européennes de loups ainsi que sur les menaces qui pèsent sur elles.
--	---

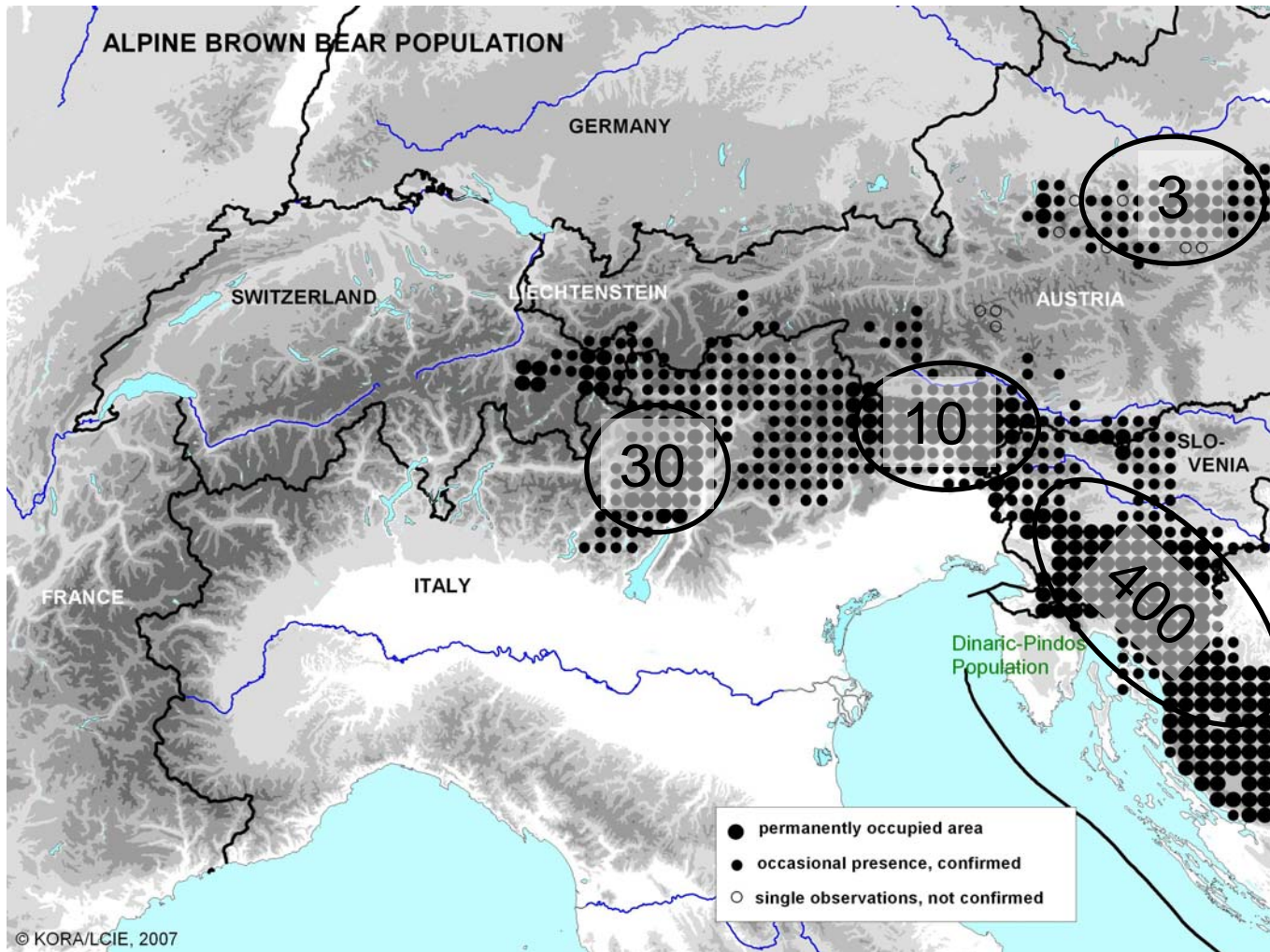


Bear





The distribution of large carnivores in the Alps





Bear

- **International Bear Workshops since 2006**

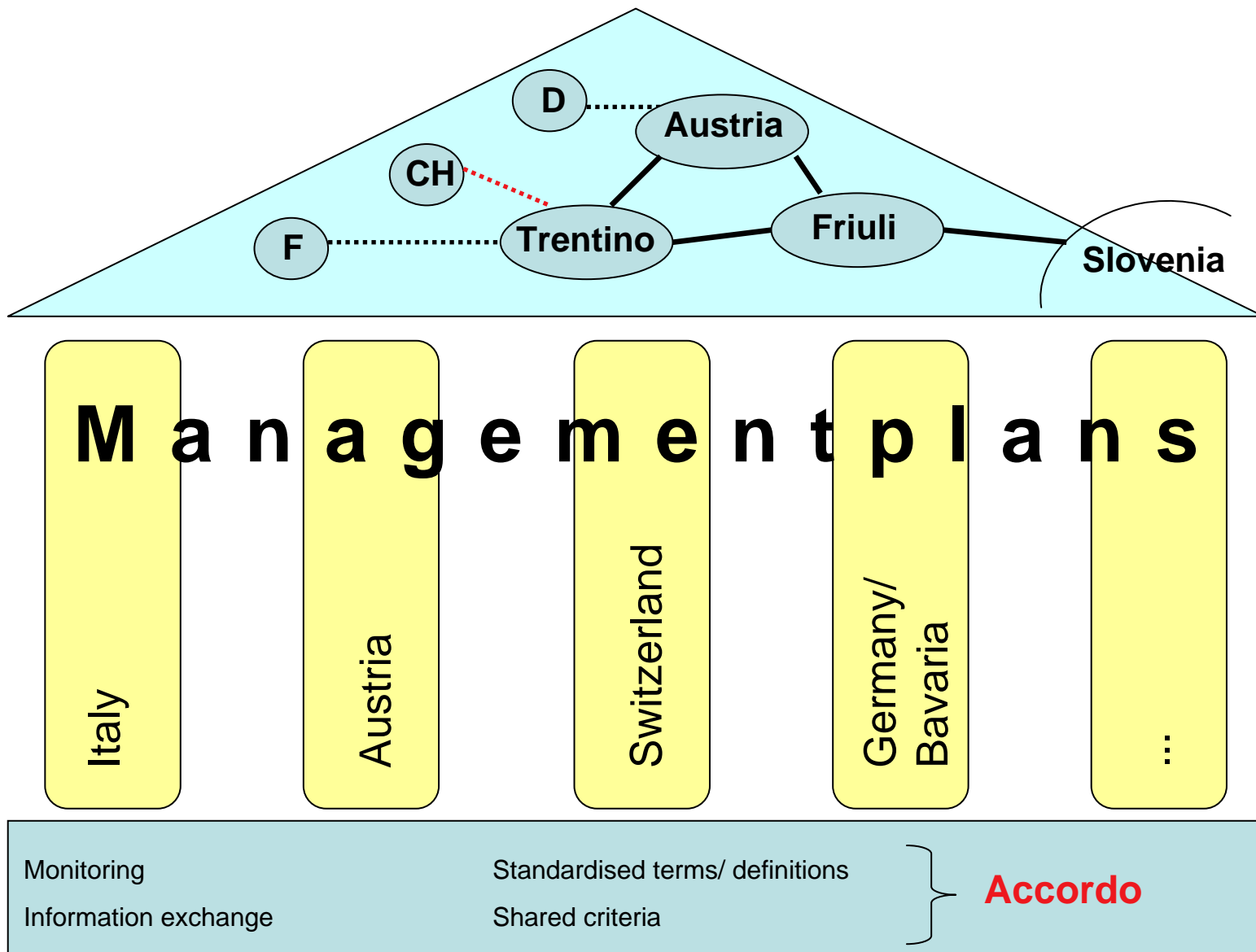
- **Achievements:**

- Management plans for each country** (Austria 1988/2002, Italy 1999/2008, Switzerland 2006, Bavaria 2007)

- Standardised bear-typology** (Chur 2006)

- Preamble of Liechtenstein** (2007)

- „The brown bear is part of the Alpine natural heritage“, „the Alpine countries welcome its recovery“
 - „All Alpine countries will share one large population that they need to manage under a common view and a transboundary concept“





Large carnivores in the Alps

- **Future...**

- Political mandate for bear conservation

Alpine convention?





International projects

- LIFE projects
 - E.g. LIFE COEX - Improving Coexistence of Large Carnivores and Agriculture in Southern Europe (Portugal, Spain, France, Italy, Croatia)
- Interreg projects
 - Colonisation of the Alps by the wolf (Italy, France)
 - Predator prey interactions (France, Switzerland)



LCIE Guidelines

- Support of Alpine conservation strategies by LCIE Guidelines
 - Population approach
 - Taking into account the social economic dimension

