



The interests of Environmental Organisations



**Pan European Conference on Population level Management Plans
for Large Carnivores**

Postojna, Slovenia, 10th and 11th of June 2008

Mike Baltzer, WWF Danube-Carpathian Programme mbaltzer@wwfdcp.org

Brown bears *Ursus arctos*

Distribution: 10 bear populations in Europe. Very small populations include the Cantabrian (northern Spain), the Pyrenees (France and Spain), the Alps (Italy), and Abruzzo (Italy). There are two medium sized populations, the Stara Planina and the Rila Rhodope (Bulgaria - Greece). Large populations include the Dinaric-Pindos (Austria, Slovenia, Croatia, Bosnia & Herzegovina, Montenegro, Serbia, Albania, Macedonia and Greece), the Carpathian (Poland, Slovakia, Ukraine, Romania, Serbia), the Scandinavian (Norway, Sweden), the Karelain (northeastern Norway, Finland, Russia) and the Baltic (Estonia, Latvia, Belarus, Russia).



Wolverine *Gulo gulo*

Distribution: Northern Europe in two main populations; the Scandinavian population (750 individuals) covering Norway, Sweden and northwestern Finland, and the Finnish-Russian population (450 individuals) covering Finland, northwestern Russia and northeastern Norway. There is probably some exchange of individuals between these two populations, and the Finnish-Russian population is connected to the larger Siberian population to the east.



Eurasian lynx *Lynx lynx*

Distribution: 8 populations, including the Scandinavian (Norway, Sweden, northeast Finland - 2000 animals), the Northeastern (Finland, western Russia, Estonia, Latvia, Lithuania, northeastern Poland, Belarus, northern Ukraine - 4000 animals), the Carpathians (southern Poland, Czech Republic, Slovakia, Ukraine, Romania, Hungary and Serbia - 2500 animals), the Balkan (Albania, FYR Macedonia, Serbia, Montenegro - <100 animals), Dinaric (Slovenia, Croatia, Bosnia & Herzegovina), Alpine (France, Italy, Switzerland, Germany, Austria, Lichenstein, Slovenia), Jura-Vosges (Switzerland, France, Germany) and the Bavarian-Bohemian (Germany, Czech Republic, Austria).



Wolves *Canis lupus*

Distribution: 10 populations. Northwestern Iberia (Spain and Portugal - 2400), Sierra Morena (southern Spain - 50), Alps (France, Italy and Switzerland - 130-160), Italian (Italian peninsula - 500-800), Carpathian (Czech Republic, Slovakia, southern Poland, Ukraine, Romania, Serbia, Hungary - 5000), Dinaric-Balkan (Slovenia, Croatia, Bosnia & Herzegovina, Serbia, Montenegro, Albania, FYR Macedonia, Greece, Bulgaria - 5000), Karelain (Finland, western Russia - 750), Baltic (Russia, Estonia, Latvia, Lithuania, Belarus, northeastern Poland, Ukraine - 9600), and German-Polish (eastern Germany, western Poland - <50) and Scandinavia (Norway, Sweden - 130-150).



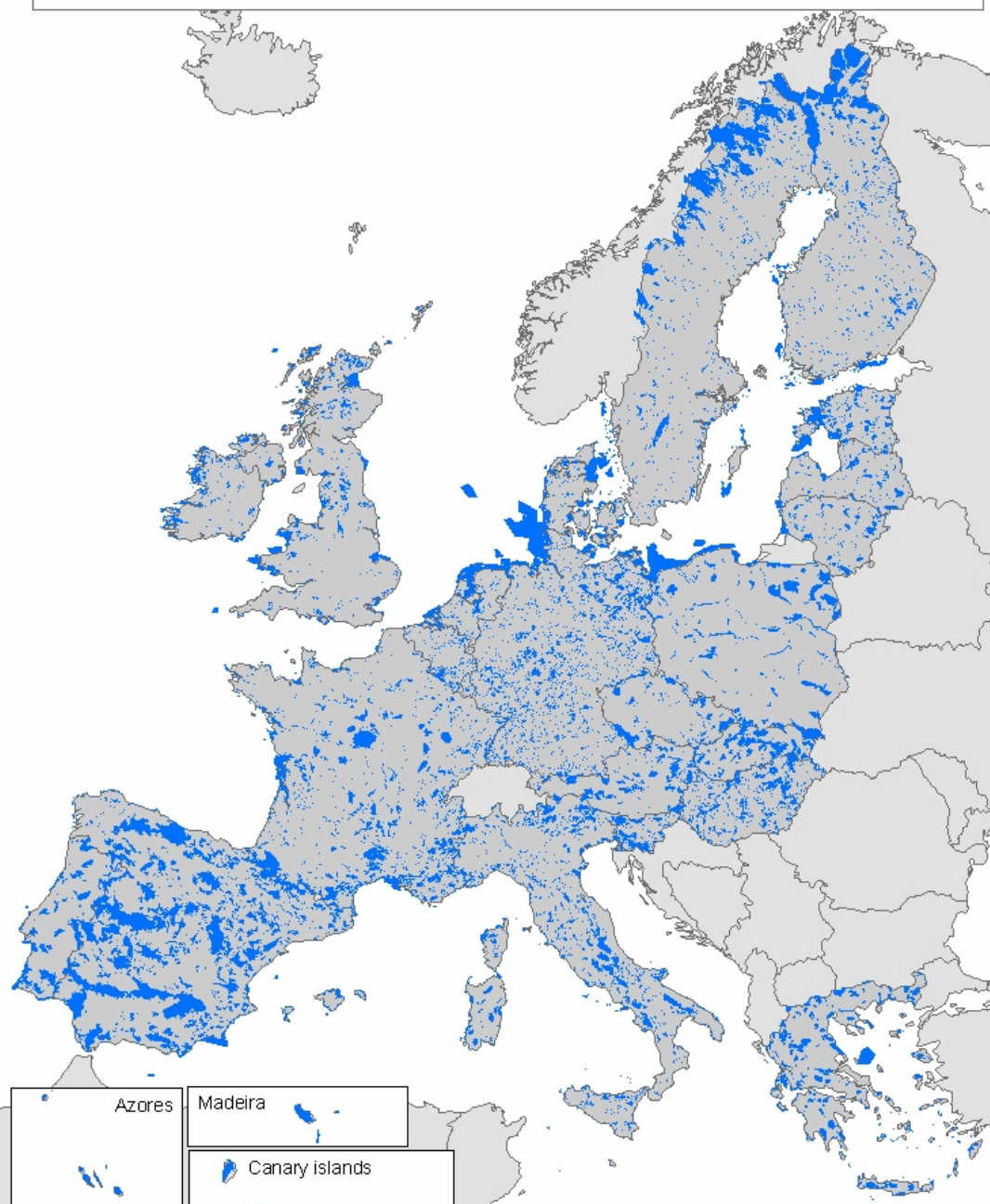








NATURA 2000 NETWORK Birds and Habitats Directive









What is needed?

International cooperation

Research and robust
management plans

Communication and
dialogue

Leadership and vision

Solutions

Legislative and financial
support from
European Union



Roles and interests of the NGOs

Promotion/inspiration/awareness

Solutions

Watchdog

Initiator

Facilitator

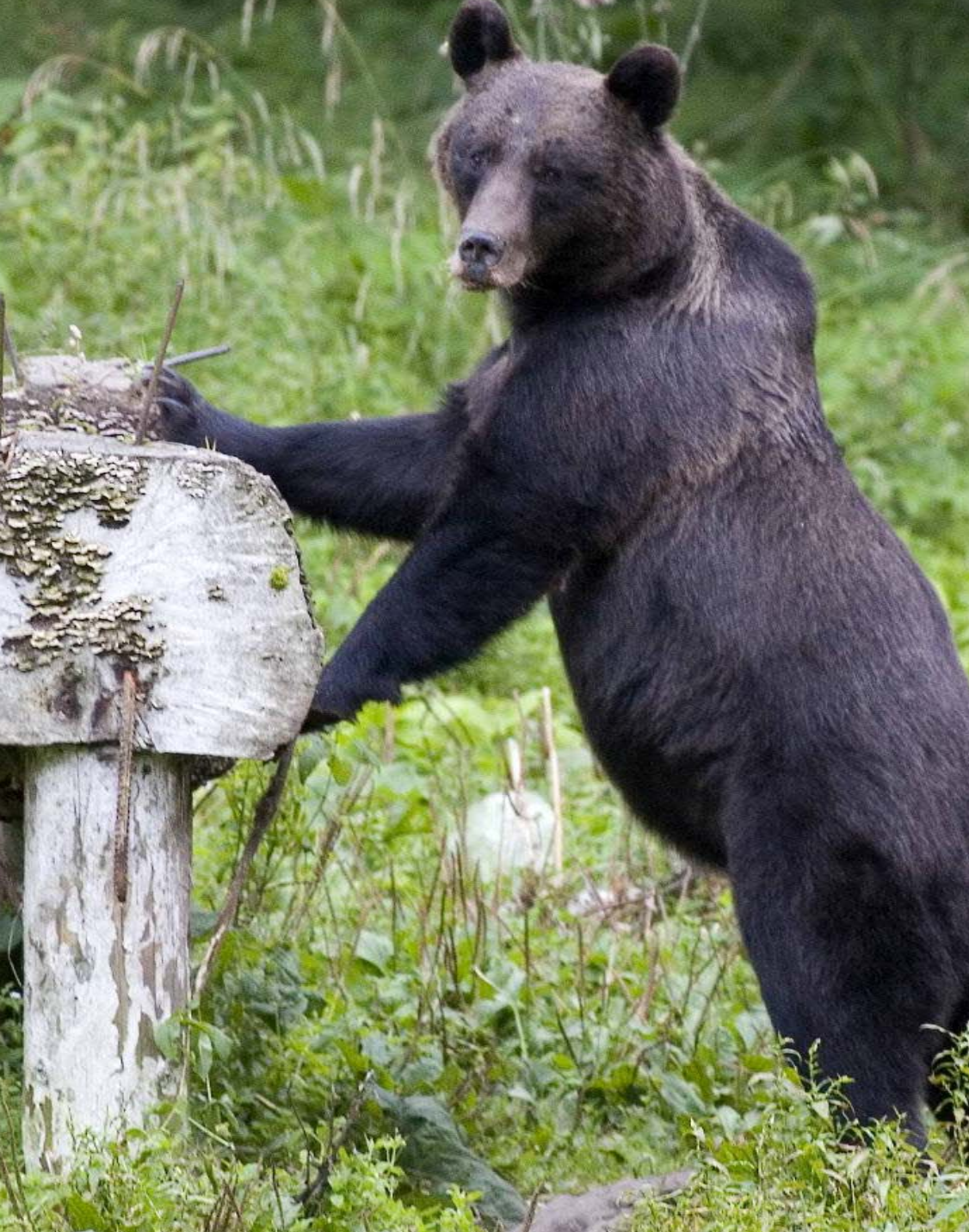
Technical support

Partnerships

Explaining legislation

Vision

Action



Approaches

PEEN and population vision

New partnerships

Rural development Policy and
new incentives

Climate Change: Role of
large scale connected
landscapes

Vision for a WILD Europe

Governmental leadership

